

The logo for YOZO, featuring the word 'YOZO' in a white, serif font with a small globe icon integrated into the letter 'O'.

YOZO

A decorative graphic at the top of the page. It features a blue background with several curved, light blue and green bands. On the left, there are several 3D cubes in shades of blue and green, arranged in a grid-like pattern. On the right, there are several white and yellow lines forming a complex, abstract shape. In the center, there are more 3D cubes, some of which are smaller and more scattered.

YOZOSOFT CO. ,LTD.

5th & 6th Floor, Taurus Building D District, Wuxi (National) Software
Park No.18 Zhenze Road,Wuxi, New District, Jiangsu, China

Postal code: 214135

E-mai: ts@yozosoft.com

By Phone: +86 510 8538 1608 ext (8288) (English)

By Fax: +86 510 8538 7603

Website:<http://www.yozosoft.com>

YOZO Office

Installation guide

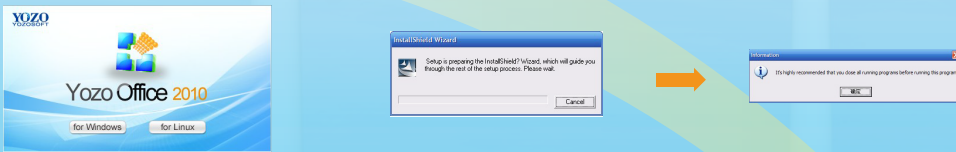
YOZO Office Installation steps

Please check the disk space before installation

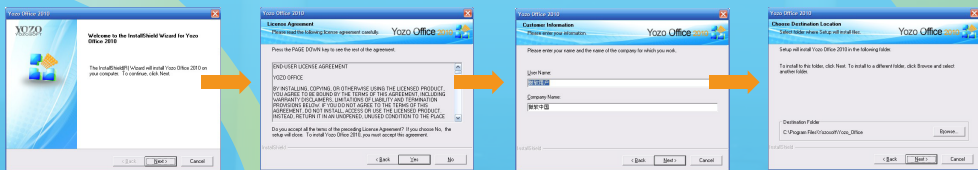
Operating system	Windows: 7/Vista/Xp/2000SP4(all versions include 64 bit versions)
Memory	256M or more
CPU Processor	P III450MHz or equivalent Processor or faster, ideally faster than PIV.3 GHz
Hard disk space	More than 350mb
Resolution	256 colors Super VGA(800X600) or higher
Support Environment	JDK 1.4.2 or higher
Other Components	Support using USB function 2.0 and greater Standard keyboard, mouse and CD ROM Users log in and online upgrade need connected network environment (ideally using broadband)

* Please log in with the accounts have administrator authority to perform installation

Double click “EINS.exe” in the installation program. Put installation disk in the CD-ROM when using the installation disk to perform installation, it will automatically access to the installation program.

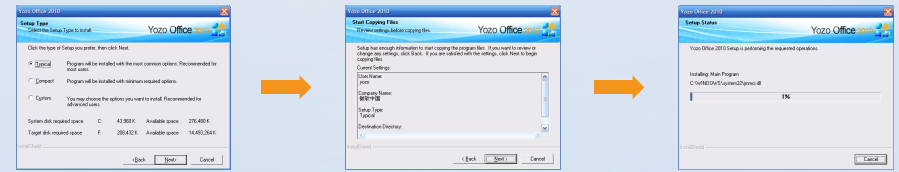


Access to “Welcome to use Yoazo 2010” when the Installation Wizard is started; click “Next” to access to the “License Agreement” page. Please take a moment to read the license agreement, click “Yes” to access next step.



When the “User Information” page appears, please fill in the user name and company

name, click “Next”. Then set the destination location of the installation, the default folder is “C:\Program Files\Yozosoft\Yoazo_office”. To install in other folder, please click “Browse”



When the installation type page appears, select the installation type and click “Next” to start installation. There are three installation types. Here we take “General Installation” as an example.

After copied all files, the “Installation Type Setting” page will appear. To automatically open and edit the existing “*.doc, *.xls, *.ppt”, please select “Use Yoazo Office to open doc, xls, ppt files” and then click “Next”.

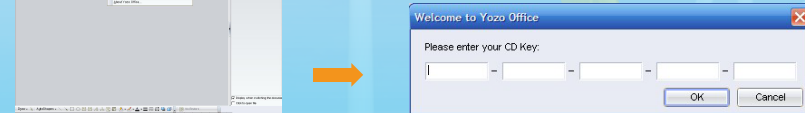
Then the installation is finished. To make settings take effect, please restart the computer. Please select “Yes, restart the computer immediately” and click “Finish”. The computer will automatically restart and the Yoazo Office could be normally used.

Upgrade to Official Version

The trial products have a 30-day trial period to make easy for you to understand products. If you purchased our products, you can upgrade to the official version.

1. “Help” menu, select “Upgrade to Official Version”

2. Enter the original CD-Key in the pop up window. Click OK to upgrade the product to the official version.



The users could enjoy downloading upgrades, special event information and other service after registered Yoazo Office. (Registering user information needs connected network environment)

1. “Help” menu, select “Register Product”

2. It will appear the user name and company information same as in installation (they also could be modified here) after popped up “Register Product” dialog box.

